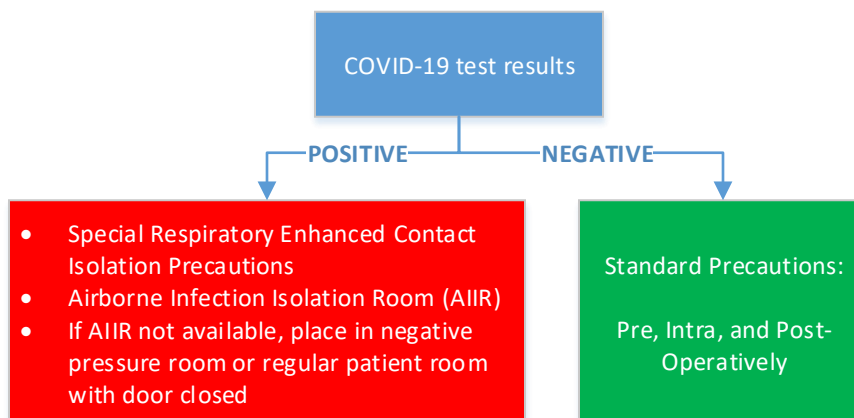
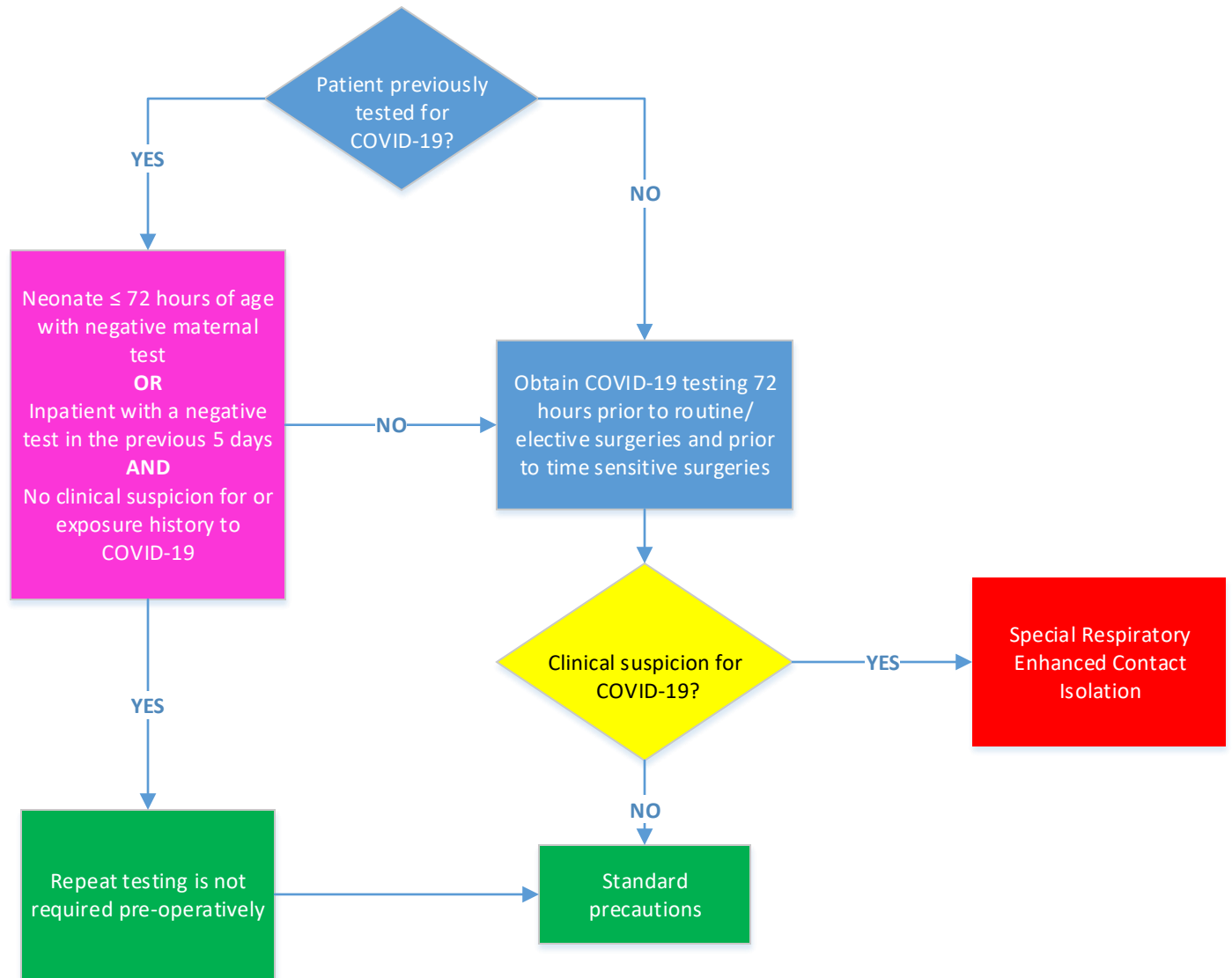
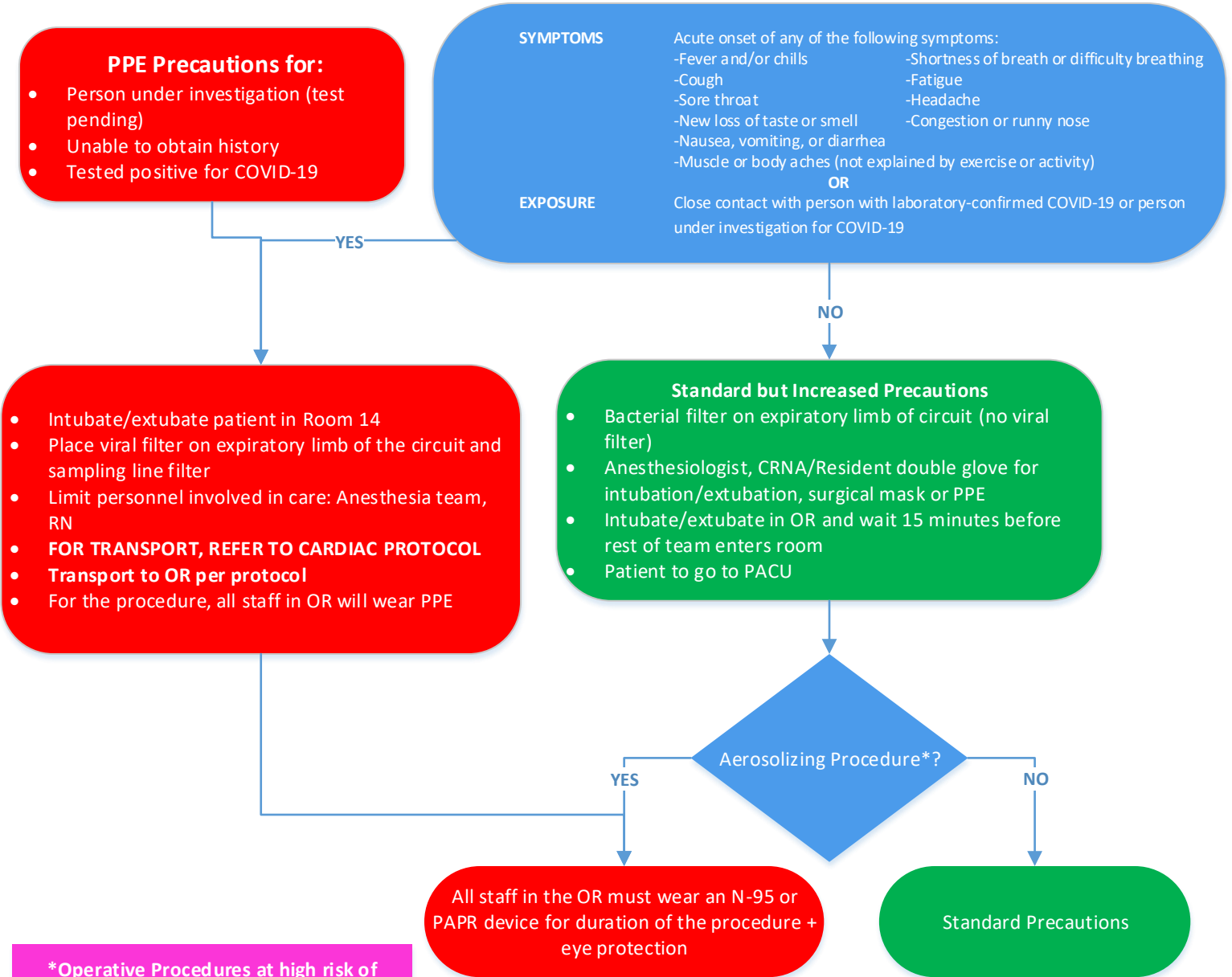


ACH COVID-19 Pre-Operative COVID Testing



ACH COVID-19 Workflow Perioperative Areas



***Operative Procedures at high risk of aerosolization**

- GI
- ENT
- Dental/Oral Maxillofacial

not an exhaustive list if felt that an N-95 is needed please use the appropriate protection

Personal Protective Equipment (PPE)

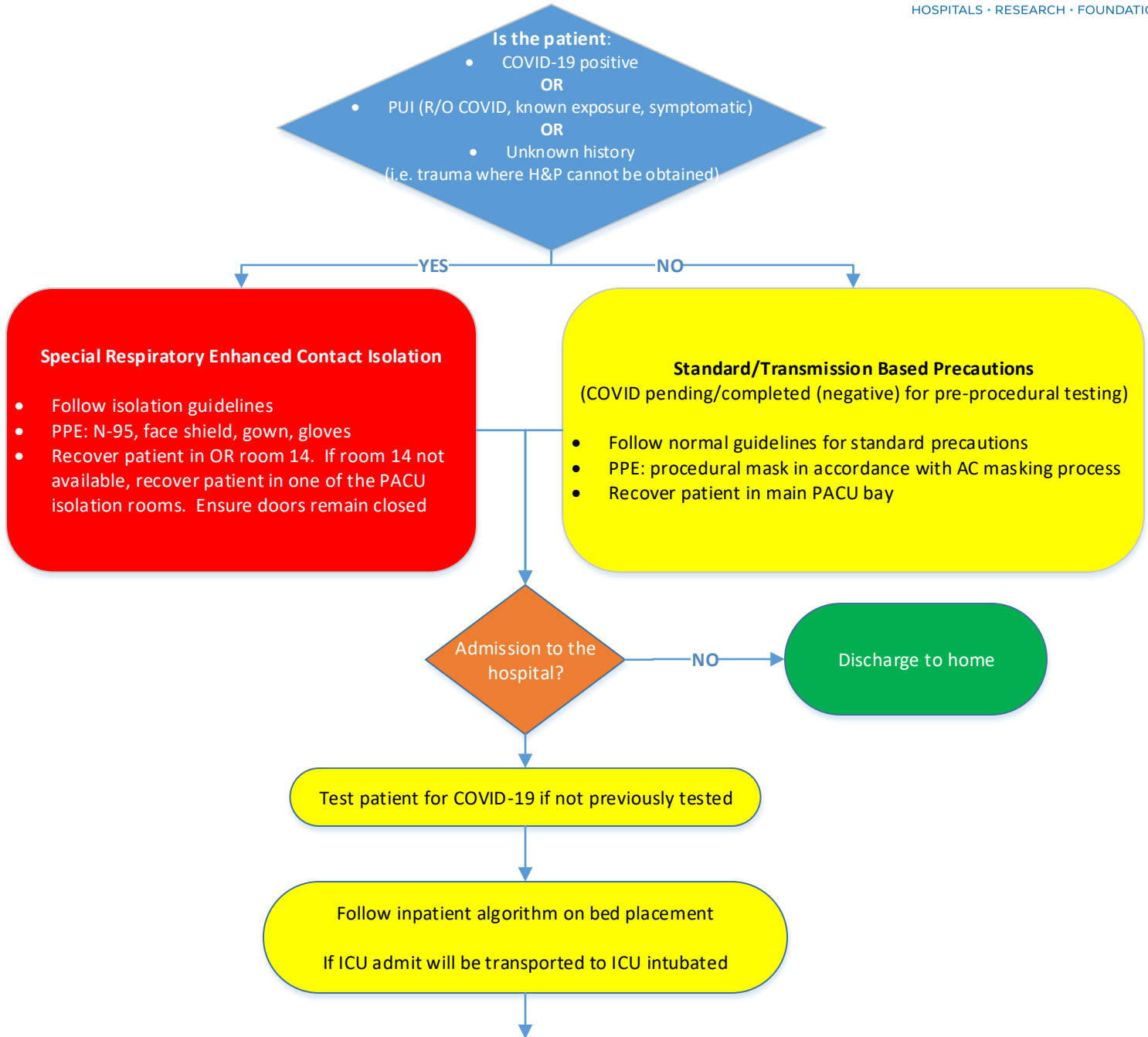
- *Standard isolation* mask for routine care
- N-95 mask (**FIT test required**) or PAPR (MAXAIR PAPR) for aerosol-generating procedures
- N-95 mask for collecting specimen to rule out COVID
- Eye protection
- Gown
- Gloves

Aerosol Generating Procedures (AGPs):

- Open suctioning of airways (oral, anterior nasal, nasal pharyngeal, endotracheal, tracheostomy)
- Sputum induction
- Cardiopulmonary resuscitation
- Endotracheal intubation/extubation
- Non-invasive ventilation (e.g. BiPAP, CPAP)
- Ventilator circuits with open exhalation (i.e. Trilogy, Vivo-65 or LTV ventilators)
- 3100 A/B Oscillator
- Bronchoscopy and Endoscopy
- Manual ventilation (bag/face mask, bag/endotracheal tube, bag/tracheostomy)
- High flow O2 delivery via OptiFlow

For any conditions not satisfied by this pathway, please contact Infection Prevention on-call

ACH COVID-19 Workflow Post-Op



Addendum to Clinical Guidelines for Bed Placement

3/25/20 V.1.0

COVID-19 (confirmed positive)	<ul style="list-style-type: none"> Place patient on Special Respiratory Enhanced Contact Isolation precautions Place patient in an Airborne Infection Isolation Room (AIIR); if AIIR not available, place in negative pressure room or regular patient room with door closed
R/O COVID-19 (formerly PUI)	<ul style="list-style-type: none"> Place patient on Special Respiratory Enhanced Contact Isolation precautions Place patient in a regular private room with door closed

For any conditions not satisfied by this pathway, please contact Infection Prevention on-call