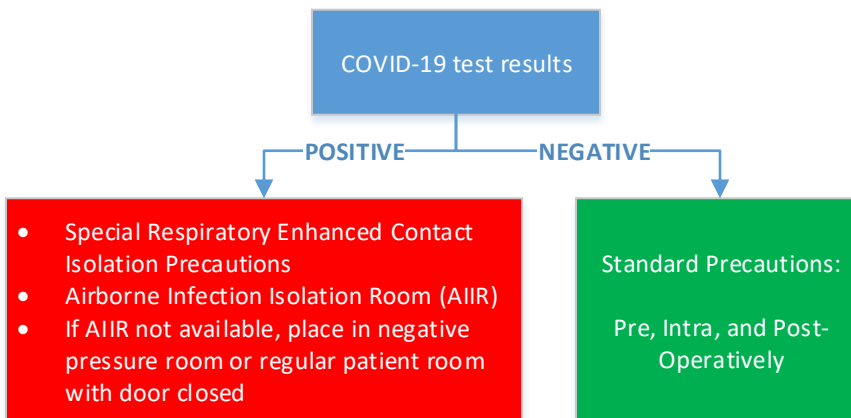
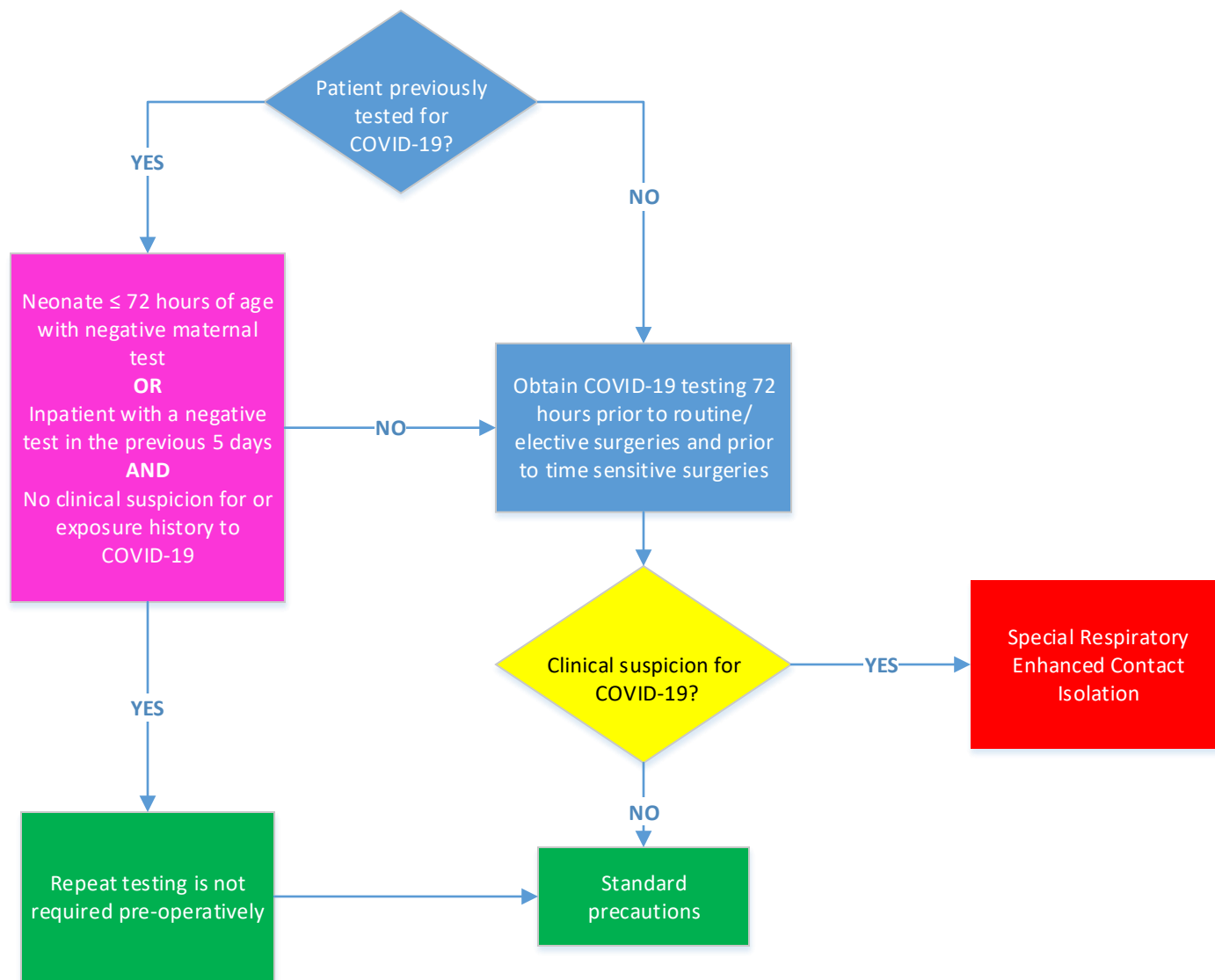
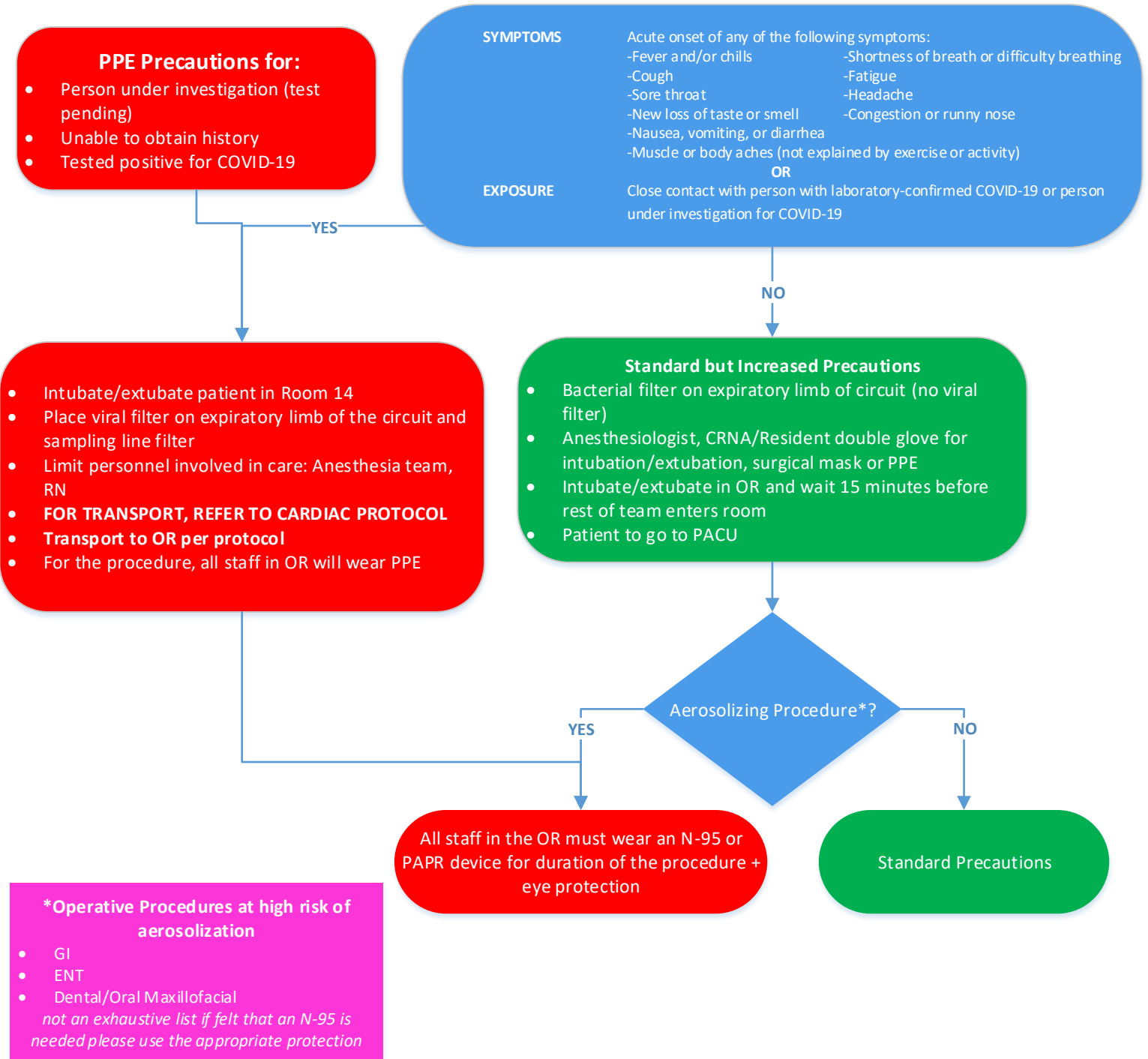


ACH COVID-19 Pre-Operative COVID Testing



ACH COVID-19 Workflow Perioperative Areas

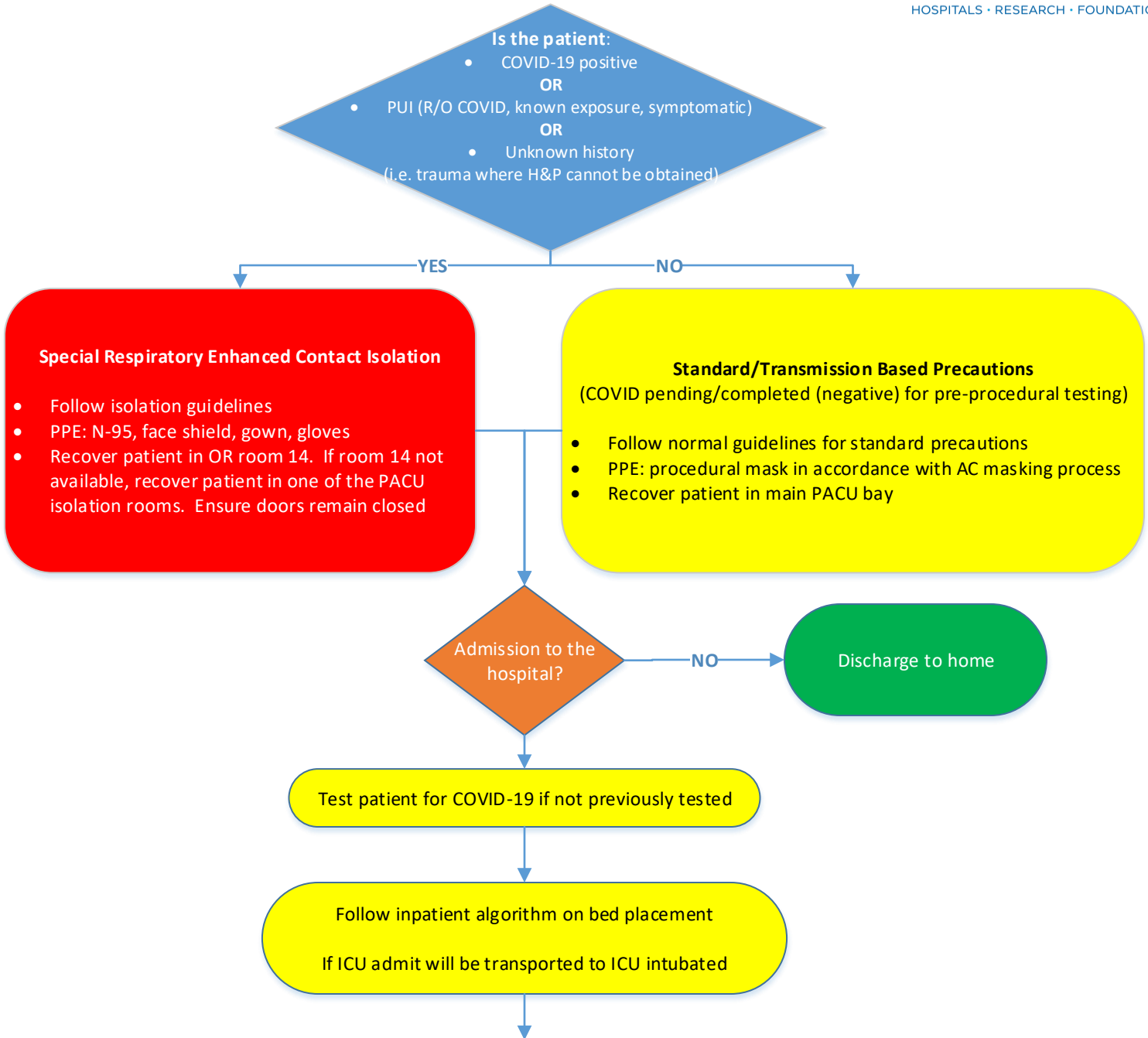


- Personal Protective Equipment (PPE)**
- Standard isolation mask for routine care
 - N-95 mask (**FIT test required**) or PAPR (MAXAIR PAPR) for aerosol-generating procedures
 - N-95 mask for collecting specimen to rule out COVID
 - Eye protection
 - Gown
 - Gloves

- Aerosol Generating Procedures (AGPs):**
- Open suctioning of airways (oral, anterior nasal, nasal pharyngeal, endotracheal, tracheostomy)
 - Sputum induction
 - Cardiopulmonary resuscitation
 - Endotracheal intubation/extubation
 - Non-invasive ventilation (e.g. BiPAP, CPAP)
 - Ventilator circuits with open exhalation (i.e. Trilogy, Vivo-65 or LTV ventilators)
 - Bronchoscopy and Endoscopy
 - Manual ventilation (bag/face mask, bag/endotracheal tube, bag/tracheostomy)
 - High flow O2 delivery via OptiFlow

For any conditions not satisfied by this pathway, please contact Infection Prevention on-call

ACH COVID-19 Workflow Post-Op



Addendum to Clinical Guidelines for Bed Placement	
COVID-19 (confirmed positive)	<ul style="list-style-type: none"> Place patient on Special Respiratory Enhanced Contact Isolation precautions Place patient in an Airborne Infection Isolation Room (AIIR); if AIIR not available, place in negative pressure room or regular patient room with door closed
R/O COVID-19 (formerly PUI)	<ul style="list-style-type: none"> Place patient on Special Respiratory Enhanced Contact Isolation precautions Place patient in a regular private room with door closed

3/25/20 V.1.0

For any conditions not satisfied by this pathway, please contact Infection Prevention on-call