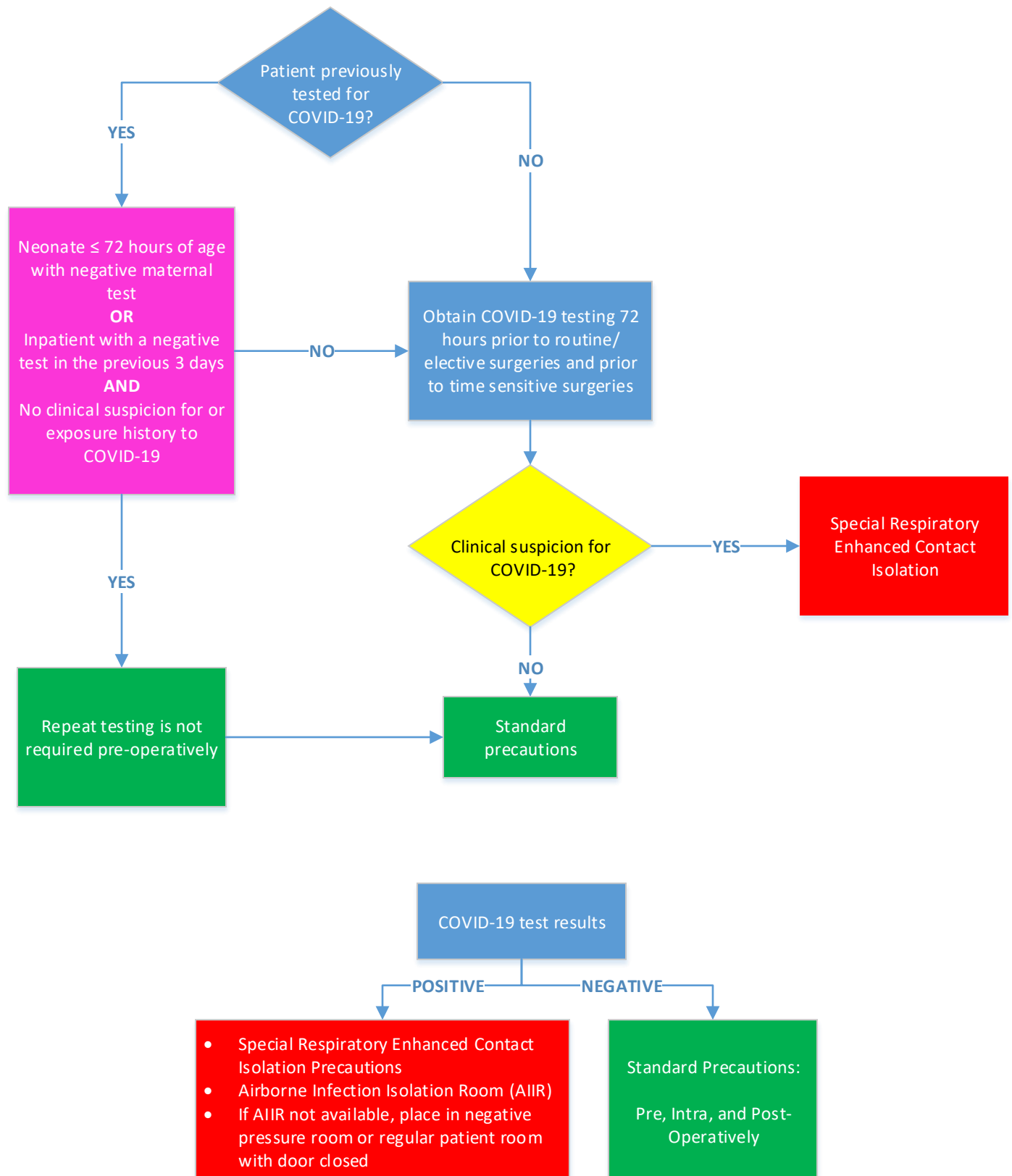
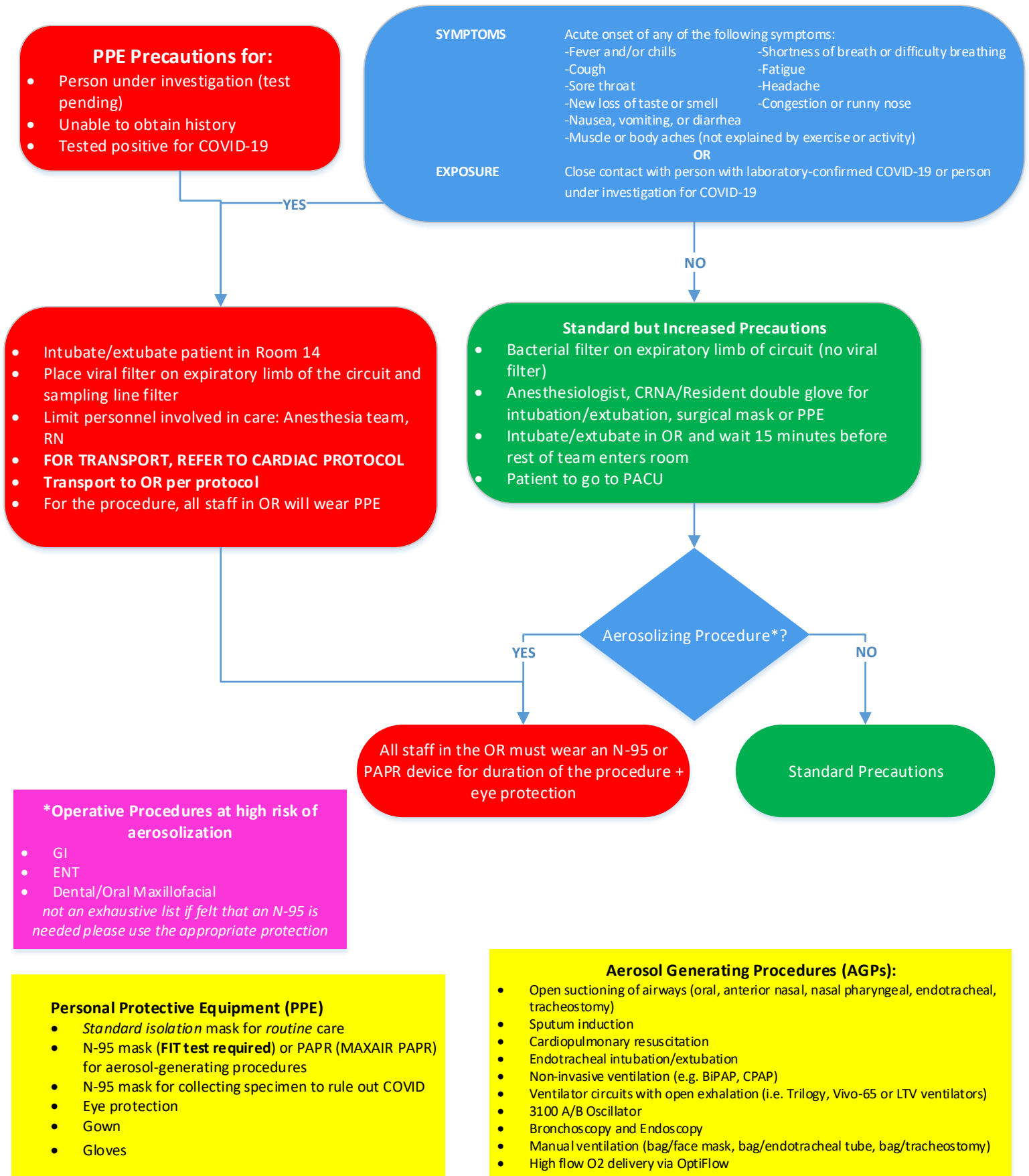


ACH COVID-19 Perioperative Clinical Pathway



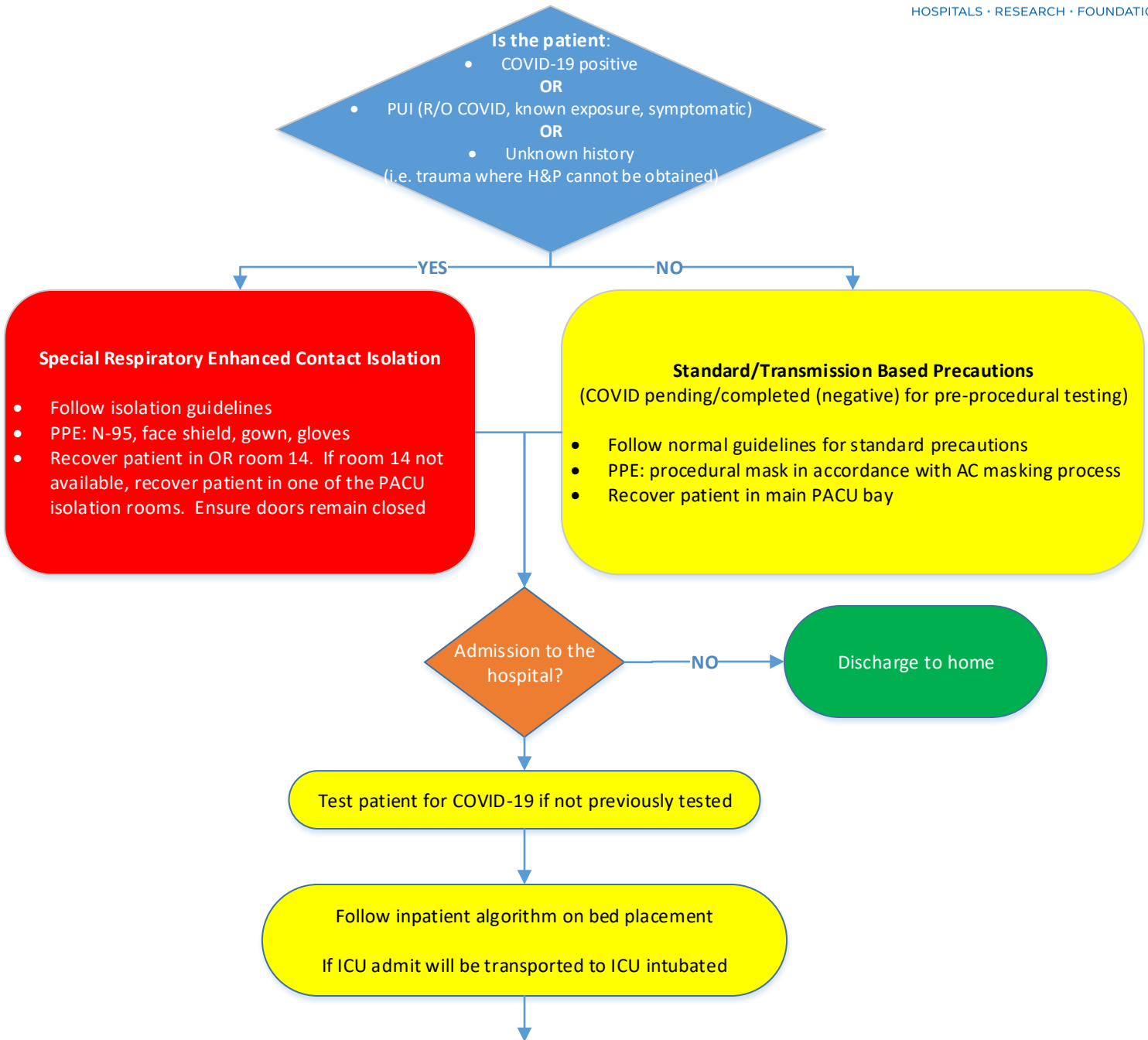
ACH COVID-19 Workflow

Perioperative Areas



For any conditions not satisfied by this pathway, please contact Infection Prevention on-call

ACH COVID-19 Workflow Post-Op



Addendum to Clinical Guidelines for Bed Placement	
3/25/20 V.1.0	
COVID-19 (confirmed positive)	<ul style="list-style-type: none"> Place patient on Special Respiratory Enhanced Contact Isolation precautions Place patient in an Airborne Infection Isolation Room (AIIR); if AIIR not available, place in negative pressure room or regular patient room with door closed
R/O COVID-19 (formerly PUI)	<ul style="list-style-type: none"> Place patient on Special Respiratory Enhanced Contact Isolation precautions Place patient in a regular private room with door closed

For any conditions not satisfied by this pathway, please contact Infection Prevention on-call