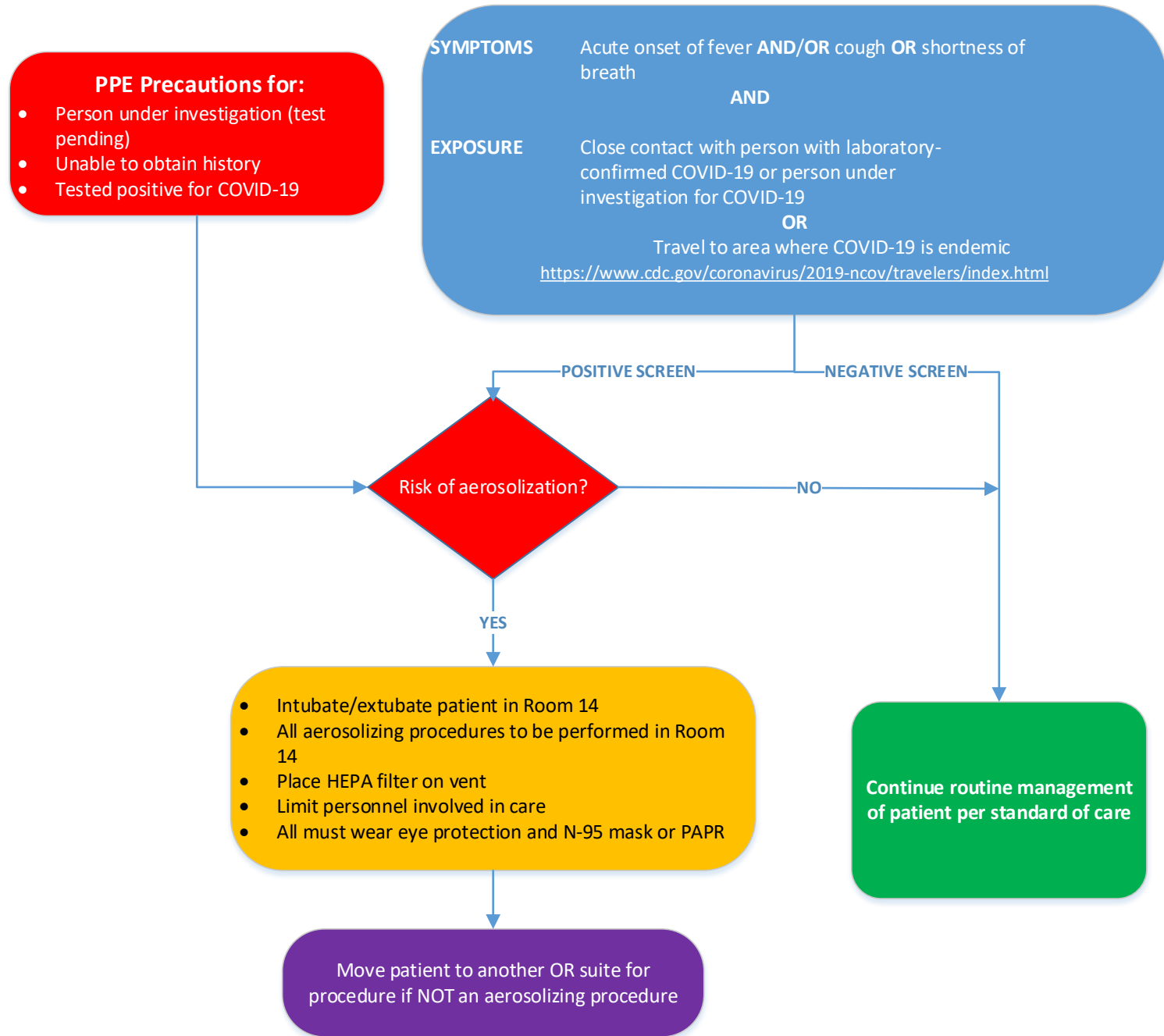


ACH COVID-19 Screening Perioperative Areas



HOSPITALS • RESEARCH • FOUNDATION



- Personal Protective Equipment (PPE)**
- *Standard isolation* mask for routine care
 - N-95 mask (FIT test required) or CAPR (MAXAIR PAPR) for aerosol-generating (likely to produce cough) procedures
 - Eye protection
 - Gown
 - Gloves

- General Aerosol Generating Procedures:**
- Nasopharyngeal swab
 - Tracheal intubation/extubation
 - Suction before/after intubation
 - Nebulizer treatments
 - Manipulation of oxygen masks
 - Manual ventilation
 - Bronchoscopy
 - Non-invasive ventilation
 - Defibrillation
 - Chest physiotherapy
 - High flow oxygen
 - Tracheostomy
 - Manipulation of BIPAP mask
 - Open endotracheal suction

For any conditions not satisfied by this pathway, please contact Infection Prevention on-call